



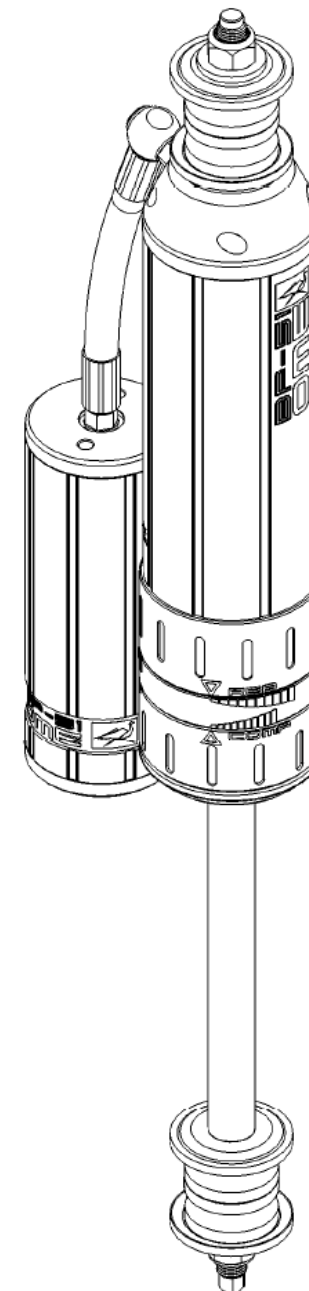
FITTING INSTRUCTIONS

BP5160005 & BP5160038 SUITS GU/GQ PATROL FRONT
BP516007 & BP5160040 SUITS GU/GQ PATROL FRONT LONG

WARNING

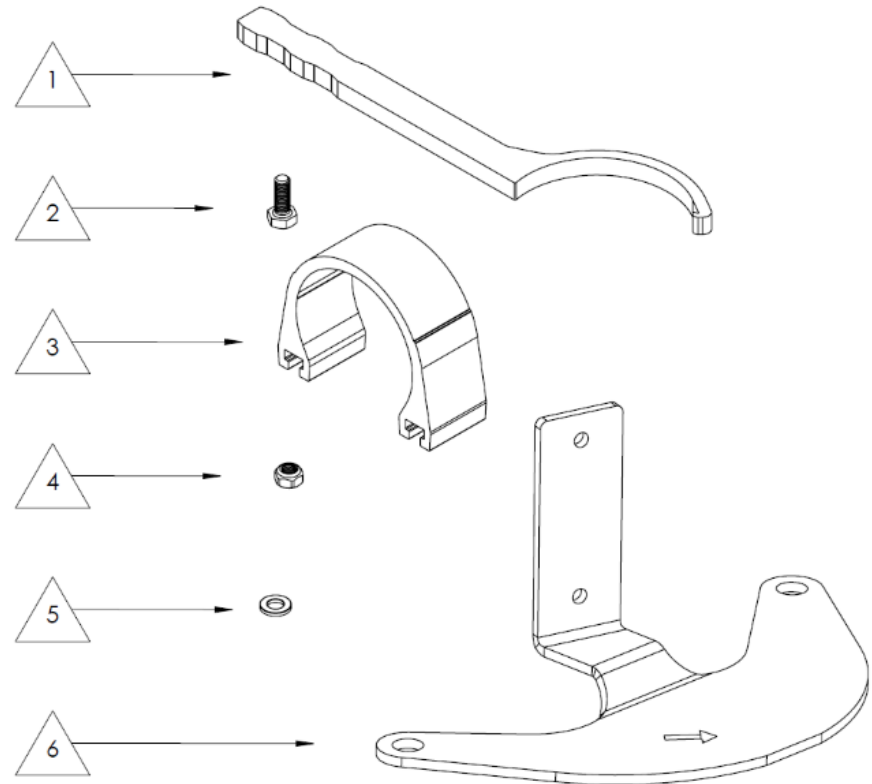
- ◆ BP5160007 & BP5160040 are designed for Modified 4" Lift Kits only, not 2" Lift Kits.
- ◆ ARB is NOT responsible for the fitment of the modified 4" Lift Kit. Extensive modification must be undertaken before fitting this product such as extended sway bar links, brake lines, electrical lines, bump stops etc.
- ◆ This product must be installed exactly as per these instructions using only the hardware supplied.
- ◆ In the event of damage to any suspension component, contact your nearest authorised ARB stockist. Repairs or modifications to the suspension system components must not be attempted.
- ◆ Do not use this product for any vehicle make or model, other than those specified by ARB.
- ◆ Do not remove labels from suspension components.
- ◆ This product or its fixing must not be modified in any way.
- ◆ The installation of this product may require the use of specialized tools and/or techniques
- ◆ It is recommended that this product is only installed by trained personnel
- ◆ These instructions are correct as at the publication date. ARB Corporation Ltd. cannot be held responsible for the impact of any changes subsequently made by the vehicle manufacturer
- ◆ During installation, it is the duty of the installer to check correct operation/clearances of all components
- ◆ Work safely at all times

Note: These fitting instructions should be read in conjunction with the vehicle workshop manual.



FITTING KIT CONTENTS – VM80010022

Item	Description	Qty	Spare Part No
1	ADJUSTER TOOL	1	VC10010071SP
2	BOLT M6 x 1.0 x 16	4	VD60030003SP
3	MOUNT RESERVOIR CLAMP	2	VE10010003SP
4	NUT M6 NYLOC	4	VD60010003SP
5	WASHER 6mm BLACK	4	VE70020005SP
6	BRKT RESI GU FRONT RH (SHOWN)	1	VE10020023R
	BRKT RESI GU FRONT LH	1	VE10020023L



MOUNTING SEQUENCE

Remove old dampers from vehicle.

Remove the shock mounting tower and retain fasteners (1).

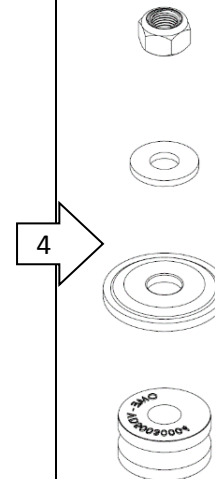
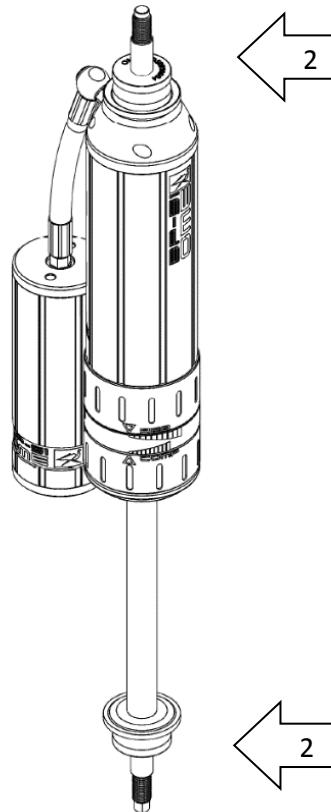
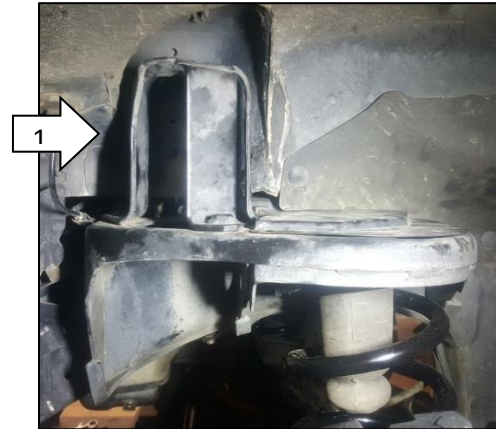
NOTE: It's easiest to fit dampers with axle in droop. Ensure brake lines and ABS wires etc. are not over extended during the process.

Before fitting the RHS damper remove the nut, small washer, large washer and bush on both the top and bottom (2).

Feed the reservoir through the mount from the bottom to the top followed by the damper. Refit the shock mounting tower, ensure that the hose exits the tower as shown (3). Refer to OE manual for torque settings.

Fit the remaining bush, washers and nyloc nuts as per the order of the exploded view (4) to both the top and bottom of the damper pin (5). Secure the nyloc nuts finger tight at this stage.

Repeat for the LHS.



RESERVOIR MOUNTING SEQUENCE

Fit M6 bolts to the Reservoir Bracket and secure with nyloc nut and flat washer (1).

The nuts and washers should be to the inside with the bolt hexagonal head to the outside to accept the reservoir mounting saddle

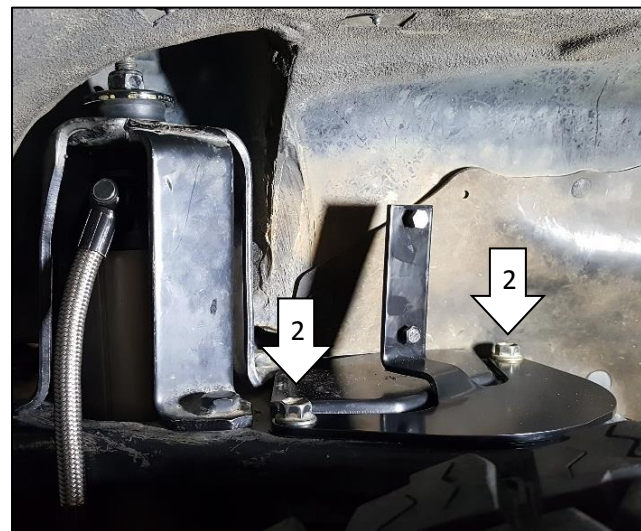
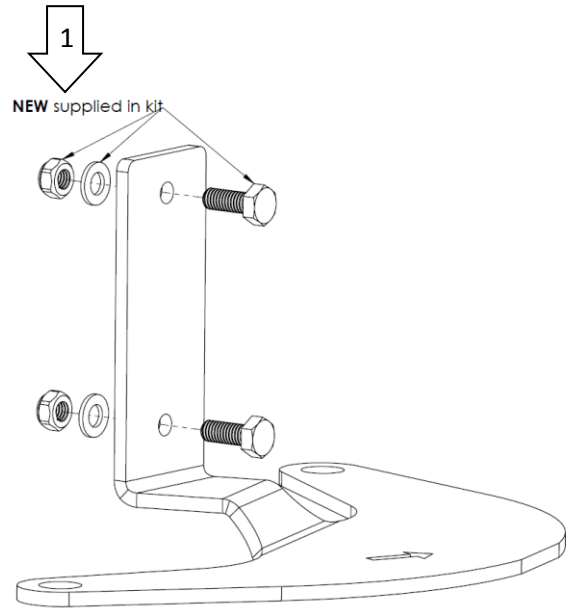
Secure finger tight only at this stage.

Fit the Reservoir Bracket, ensuring the arrow is facing to the front of the vehicle, to the top of the coil spring housing with the original existing fasteners as shown (2).

Slide the saddle over the heads of the bolts in the mounting plate and then slide the reservoir through the saddle. Centralise the saddle on the plate and adjust the position of the reservoir as shown (3)

Now that all parts are fitted, ensure the reservoir hose is free of contact from any surfaces, rotate the reservoir within the saddle if necessary. Finally tighten the reservoir saddle M6 fasteners.

With the vehicle back on its wheels secure the damper nyloc nuts until the nut bottoms on the shoulder of the pin.



DAMPING ADJUSTMENT

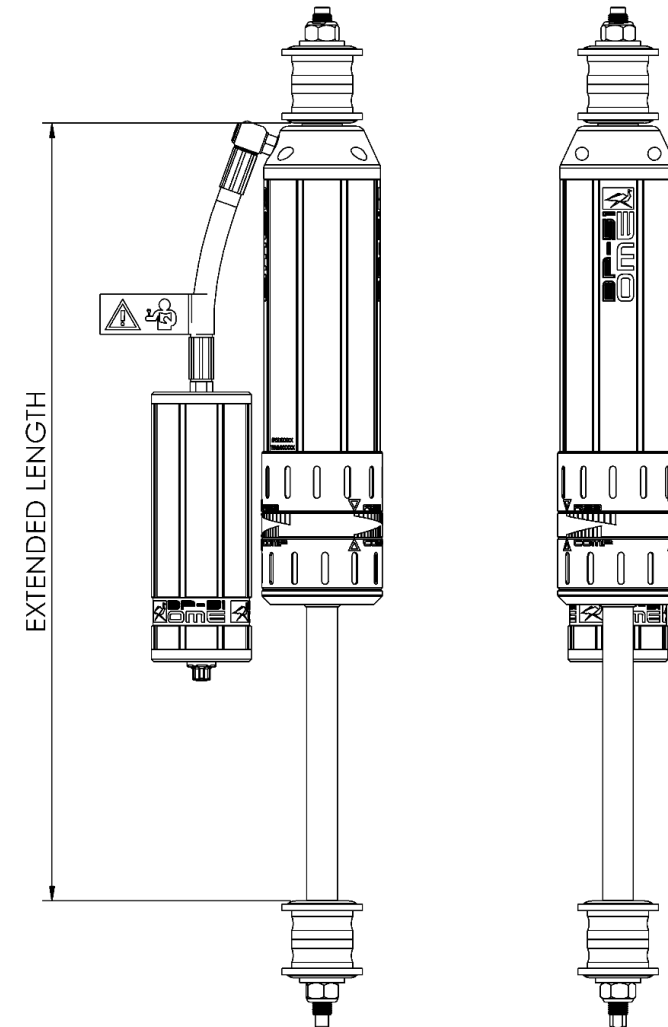
These dampers have been set in the factory to be used for a vehicle with certain load.

If your load or accessory fitment differs, use the table below as a guide for recommended compression and rebound adjuster settings.

Part Number	Front accessories	Compression	Rebound
BP5160005	Bar & Winch	4-8	6-10
	Bar only	2-6	5-9
	No accessories	0-4	4-8
Factory setting		6	7
BP5160038	Bar & Winch	4-8	6-10
	Bar only	2-6	5-9
	No accessories	0-4	4-8
Factory setting		0	4
BP5160007	Bar & Winch	4-8	6-10
	Bar only	2-6	5-9
	No accessories	0-4	4-8
Factory setting		6	7
BP5160040	Bar & Winch	4-8	6-10
	Bar only	2-6	5-9
	No accessories	0-4	4-8
Factory setting		5	7

SPECIFICATIONS

1	BP5160005 & BP5160038	Extended Length	484 mm
		Compressed Length	300 mm
2	BP5160007 & BP5160040	Extended Length	544 mm
		Compressed Length	330 mm



SPARE PARTS

Refer to Service And Part manual section:

- For BP5160005 see **BP-51 S&P 3.1-BP5160005**
- For BP5160007 see **BP-51 S&P 3.1-BP5160007**
- For BP5160038 see **BP-51 S&P 3.1-BP5160038**
- For BP5160040 see **BP-51 S&P 3.1-BP5160040**