

# STEERSMARTS™

2007 - 2018 JK/JKU Jeep Wrangler  
Yeti XD Sector Support Frame Side  
Track Bar Reinforcement Bracket

*Part Number: 79052001*

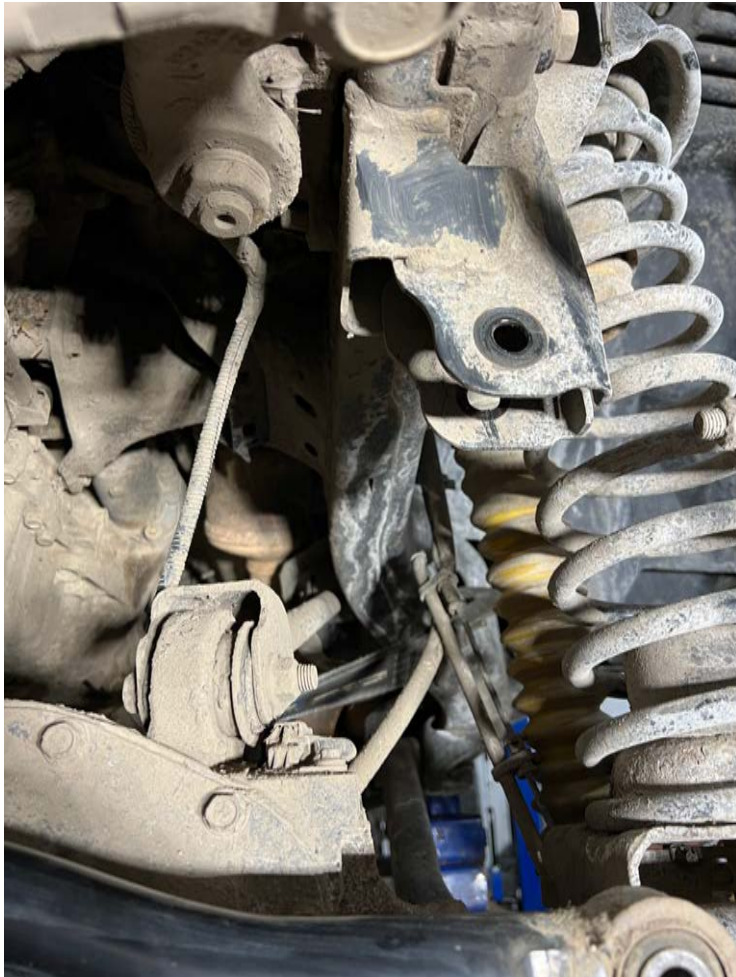


## Tool List:

1. Torque Wrench
  2. Ratchet Wrench
  3. Socket Extensions (will need a long one for a couple places)
  4. 13mm socket (sector shaft support plate fasteners)
  5. 18mm socket (old steering box fasteners and new track bar bolt)
  6. 19mm socket (new steering box fasteners)
  7. 21mm socket (Old Track Bar Fasteners and New track bar nut)
  8. 33mm Socket (Stock Sector Nut)
  9. 41mm Deep well Socket (New Sector Nut)
  10. Breaker bar or impact gun
  11. Rubber mallet
- 

## Installation Steps:

1. Remove the Track Bar bolt from frame side. Drop track bar down to give room/clearance while installing the bracket. It may be easier for you to completely remove track bar from the vehicle to keep it out of the way.



- Using a ratchet strap, attach one end to the spring and then the other to the frame (or somewhere that won't move and won't be in the way). Gently pull the spring back and out of the way so that you can easily access the steering box fasteners:



- Using the 31mm socket and breaker bar (or impact gun), remove the stock sector shaft nut from sector shaft:



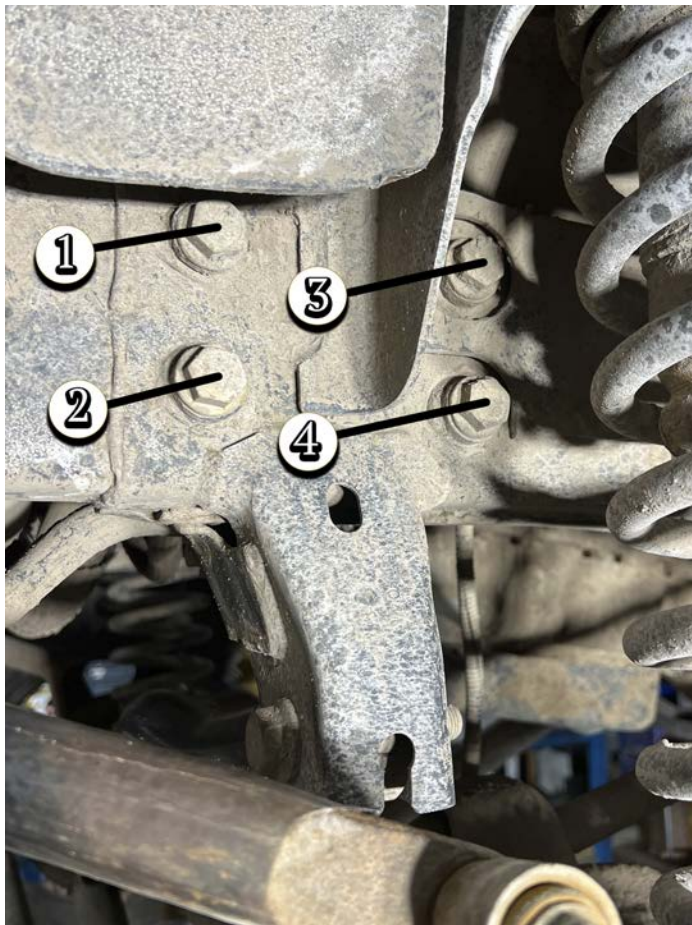
- Now it's time to install the Steer Smarts sector shaft nut. First, apply some red Loctite to sector shaft threads.



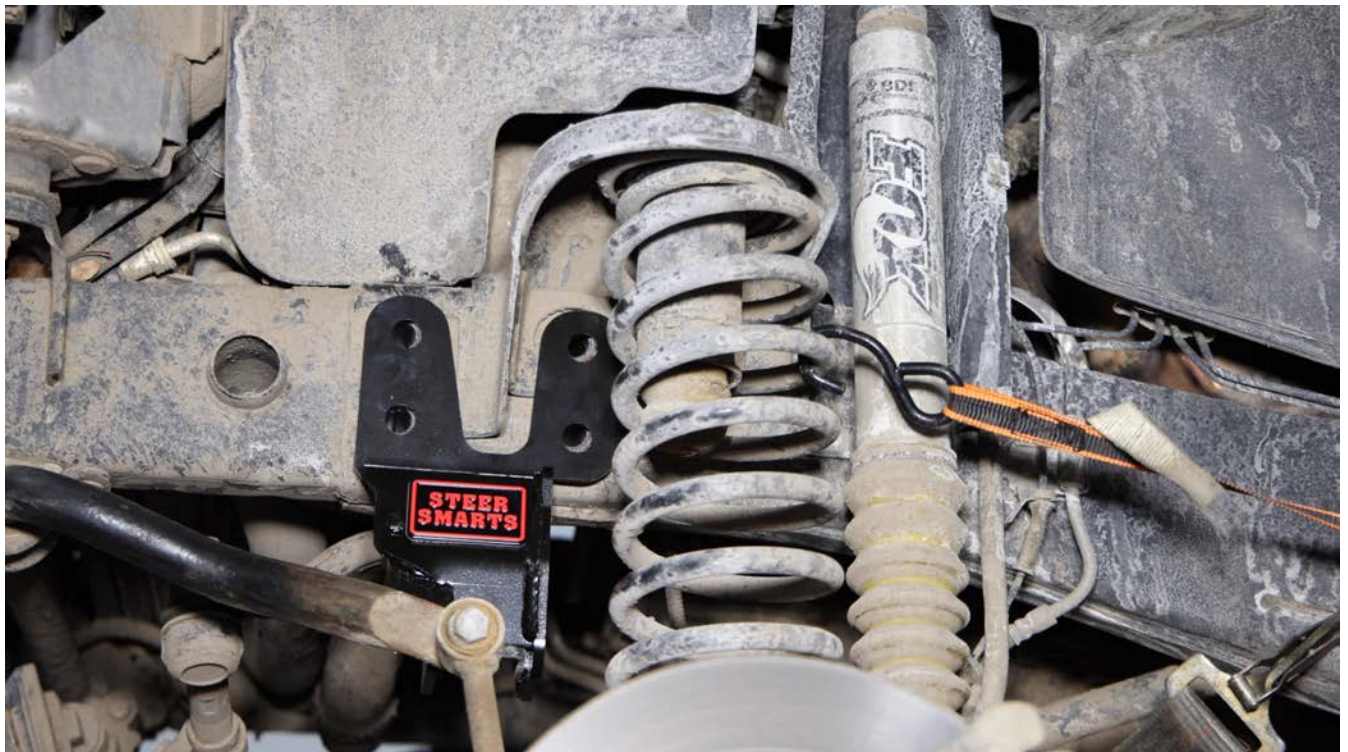
- a. Install spacer washer above the new sector nut and begin to thread onto sector.
- b. Use 41 (tightest fit) or 42mm (looser fit still works) Deep well socket to tighten down new sector nut and then torque the New Sector Nut to 185 ft. lbs.



5. Use the 18mm socket and remove 4x fasteners holding Power Steering Gear Box in place:



6. With the Bracket oriented in the same way that it will be when installed on the vehicle, begin feeding the bracket up to its mounting location, starting down by the axle and sliding it up between the sway bar and the frame. Once in position, place the new M14 track bar bolt into the new bracket and through the stock frame bracket to hold it in place.



7. You can now insert the new fasteners through the bracket and into the steering box. You will need to hold the steering box with one hand to raise/lower/manipulate the box while feeding the fasteners with the other hand until you get the fasteners through the frame threaded into the steering box holes. Once the bolt catches the threads of the steering box, slowly turn each fastener by hand 5 or so times so that the bolt is properly threaded into the box to avoid cross-threading



8. Use the 19mm socket to torque new fasteners to 80 ft. lbs. each then mark with a paint marker.



9. Place the roller bearing plate into position, orientating the plate so that the recess on the bearing plate is facing down. The fit here will be tight so it is likely that you'll need to use a rubber mallet to gently tap the bearing plate into position. A few taps alternating between the front and back of the plate should do the trick.



10. Once the holes on the bracket are aligned with the threaded holes on the bearing plate you can install the fasteners and washers. We recommend using a little bit of Loctite on these fasteners to help keep them from loosening up after some miles have been put on the vehicle. You may need to adjust the bearing plate location slightly to line up holes exactly. *\*\*\*NOTE – The bearing is pressed into the plate at slight angle – do not attempt to flatten the bearing to the plate as this is done purposely.*



*If you should have issues with the bearing plate not lining up with bolt holes, you MAY need to loosen the steering box bolts a little to adjust the bracket location slightly for the plate to align properly – the holes for the steering box and the track bar mount are slightly oblong and can be adjusted for proper fitment.*

11. Use 13mm socket to torque roller bearing plate bolts to 25-35 ft lbs. (you will need an extension to access axle side bolt)



12. Install the c-clip beneath the roller bearing plate in the sector nut channel

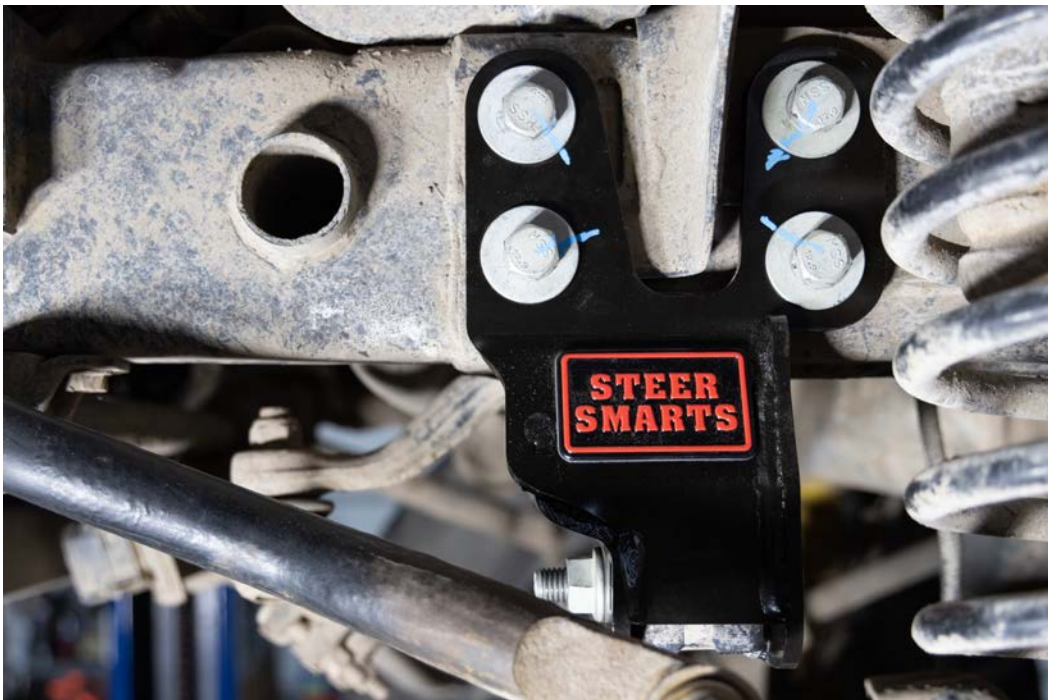




13. You can now remove the track bar bolt from the bracket and reinstall the track bar. Be sure to install the new track bar bolt from the back of the bracket (side closest to the axle,) and the nut on the front side (closest to the front bumper). The new track bar bolt is longer to accommodate the extra material of the bracket and if installed any way other than this you can get an impact with the bolt and the axle under full compression. Snug the fastener up.
14. If the vehicle isn't on the ground resting at ride height, you need to put it back on the ground before torquing the track bar bolt (unless the bushing is a heim or polyurethane or something like that). Using a 18mm socket on the bolt head and a 21mm socket on the nut, torque the track bar fasteners to 125-130 ft lbs.



15. It is recommended to add a paint marker stripe to all bolts that have been torqued so that you can verify that the bolt has been torqued and will be able to easily tell that something has loosened up if the paint marker lines no longer line up.



16. You have successfully installed the Sector Support Frame Side Track Bar Reinforcement Bracket.