

# INSTALLATION MANUAL

PRODUCT: TAILGATE TABLE

APPLICATION: JEEP WRANGLER JL (2018-)

PART NO: 2D.2730.1



## CAUTION!

To reduce the risk of serious injury or damage to property: Before you start installing and using this product, read the full instructions, pay special attention to the conditions of safe use and recommendations for installation! When installing or maintaining this product, it is necessary to use protective goggles. Check the integrity of the structure and the moment the fastening is tightened every 250 miles (400 kms) of mileage. Do not use this product if there is damage to the structure or fasteners!

# TAILGATE TABLE



Part number 2D.2730.1

Suited to vehicle: JEEP WRANGLER JL (2018-)

Material: Aluminum



## SAFETY NOTICE

- \* The RIVAL Tailgate Table is designed to complement the use and design of the specified vehicle under conditions specified by the vehicle manufacturer.
- \* Following any collisions with any other vehicle or objects, the RIVAL Tailgate Table and the vehicle must be inspected by a specialized or suitably qualified vehicle repairer for possible damage to the components and assemblies in order to confirm suitability for further use of the vehicle

## INSTALLATION NOTICE

- \* The RIVAL Tailgate Table must be mounted and affixed to the vehicle according to this installation manual.
- \* Personal safety during the installation process must be adhered to at all times.
- \* Do not install this tailgate table on vehicle models other than those allowed in this manual.
- \* Estimated time for installation: 1-2 hours.

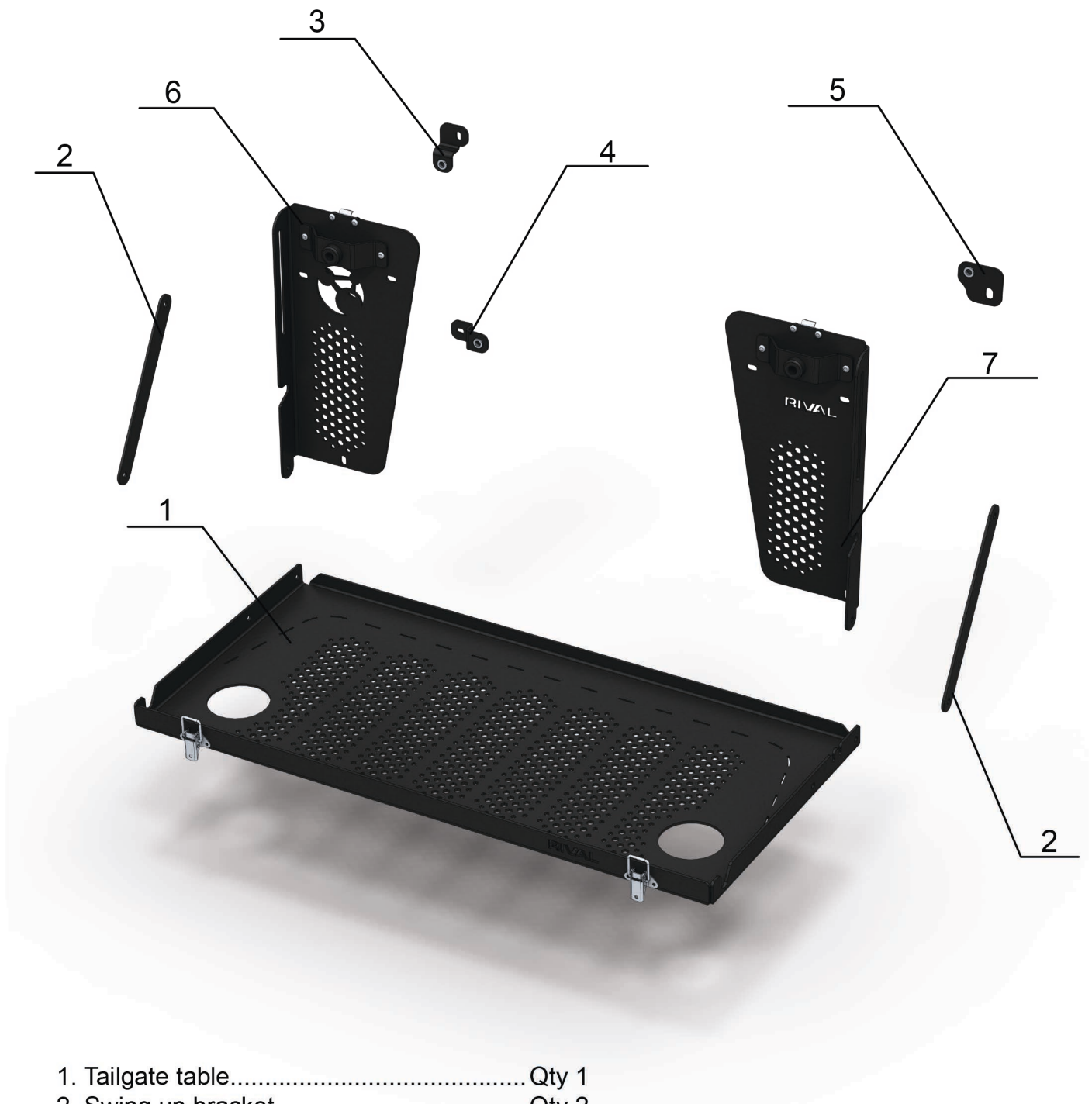
## REQUIRED TOOLS

- \* Basic tool kit
- \* Drill
- \*  $\varnothing 15/32$ " (14.5mm) Drill bit
- \* Knife
- \* Scissors
- \* Marker
- \* Masking tape
- \* Auto Trim Removal Tool
- \* Torque wrench

## TORQUE SETTING

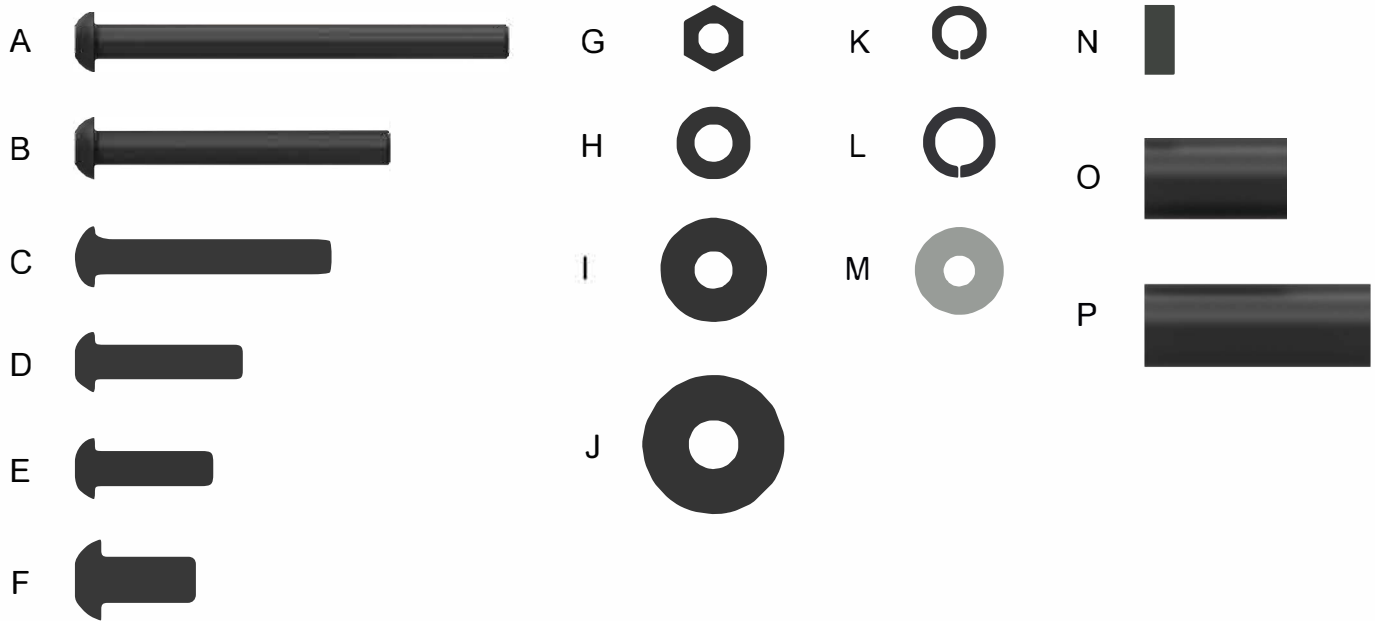
- \* M5 - 6,09 H·m (4.5 lb/ft)
- \* M6 - 10,5 H·m (7.7 lb/ft)
- \* M8 - 24 H·m (17.7 lb/ft)

# PARTS LISTING



- 1. Tailgate table..... Qty 1
- 2. Swing up bracket..... Qty 2
- 3. Insert bracket 1..... Qty 1
- 4. Insert bracket 2..... Qty 1
- 5. Insert bracket 3..... Qty 1
- 6. Left bracket..... Qty 1
- 7. Right bracket..... Qty 1

# PARTS LISTING



A. Screw M6x60 .....	Qty 2
B. Screw M6x50.....	Qty 3
C. Screw M6x40.....	Qty 1
D. Screw M6x25.....	Qty 2
E. Screw M6x20.....	Qty 4
F. Screw M8x16.....	Qty 1
G. Nut M6.....	Qty 6
H. Nylon plastic washer 6 .....	Qty 16
I. Plain Washer 6.....	Qty 6
J. Plain Washer 8.....	Qty 1
K. Spring Washer 6.....	Qty 6
L. Spring Washer 8.....	Qty 1
M. Plain Washer 5.....	Qty 2
N. Spacer 0.20"(5mm).....	Qty 2
O. Spacer 1.02"(26mm).....	Qty 4
P. Spacer 1.50"(38mm).....	Qty 2



# INSTALLATION PROCEDURE



Fig.1

1. Remove door plastic cover on rear door using auto trim removal tool (fig. 1).



Fig.2

2. Install 3 insert brackets 1,2,3 (pos. 3,4,5), (fig. 2):

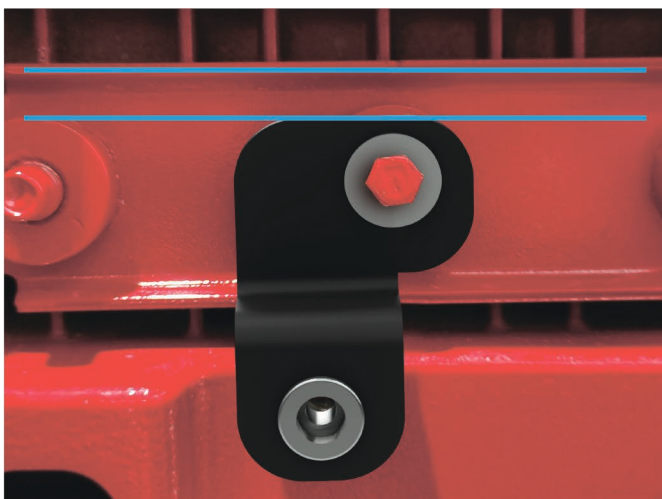


Fig.3

2.1. Fix insert bracket 1 (pos. 3), parallel to blue lines on fig. 3, using OE bolt M5 and plain washer 5 (pos. M), (fig. 3 ,4).

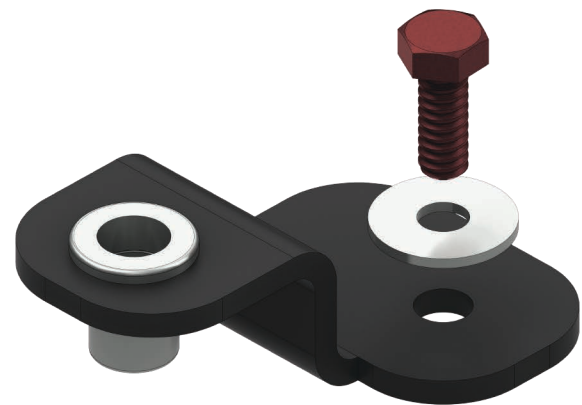


Fig.4

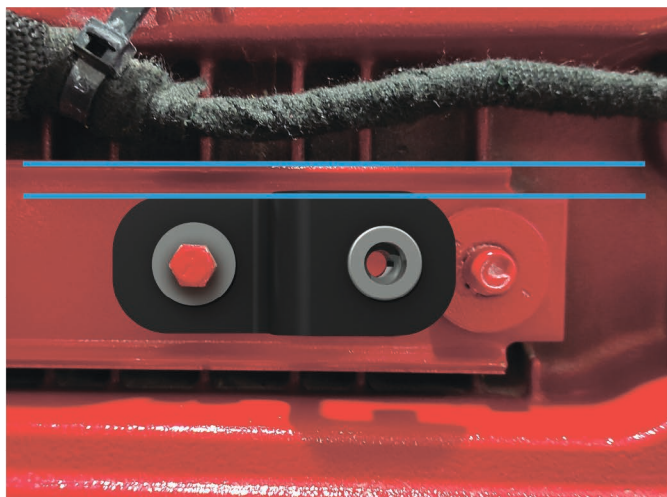


Fig.5

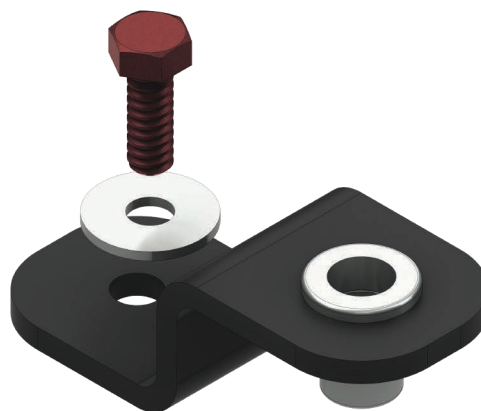


Fig.6

2.2. Fix insert bracket 2 (pos. 4), parallel to blue lines on fig. 3, using OE bolt M5 and plain washer 5 (pos. M), (fig. 5 ,6).



Fig.7



Fig.8

2.3. Fix insert bracket 3 (pos. 5), parallel to blue lines on fig. 3, using screw M8x16, plain washer 8 and spring washer 8 (pos. F,J,L), (fig. 7, 8).





Fig.9

3. Remove top cover with JEEP® logo on door plastic cover and turn door plastic cover over (fig. 9).

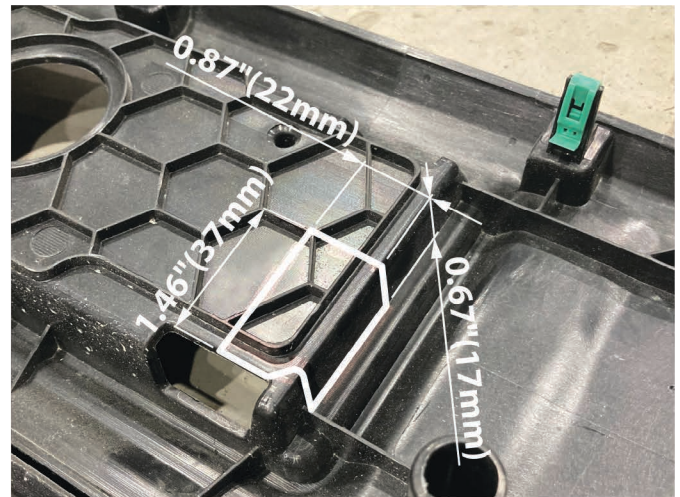


Fig.10

4. Cut out rectangular hole on door plastic cover (blue mark on fig.9) using dimensions on (fig.10).



Fig.11

4.1. Fig. 11 view of plastic cover after step 4.



Fig.12

5. Install plastic cover on the door (fig.12).



Fig.13

6. Drill 2 holes in top cover with JEEP® logo as shown (fig.13).



Fig.14

7. Install top cover with JEEP® logo on the door (fig.14).



Fig.15

8. Prepare templates in the end of this manual (template 1, template 2). Cut out zones 1 following blue dashed line and remove these zones. Place and adjust templates on the door plastic cover and fix them using masking tape (fig. 15).

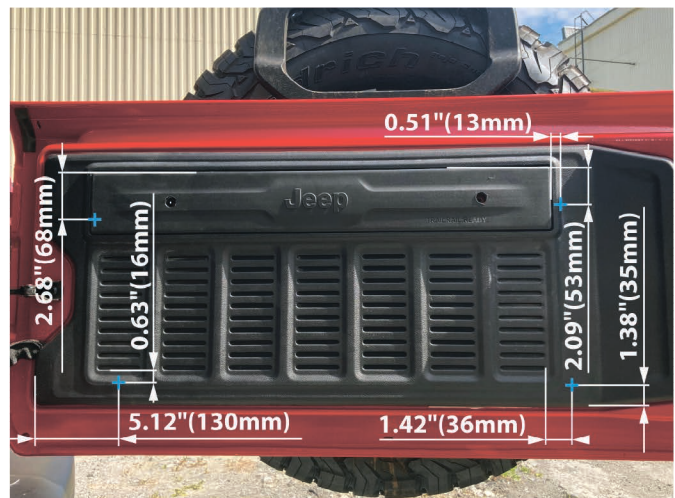


Fig.16

9. Check if you placed templates correct, using dimensions on fig. 16. Remove plastic cover. Drill 15/32" (14.5mm) diameter holes following marks on template (fig.16).



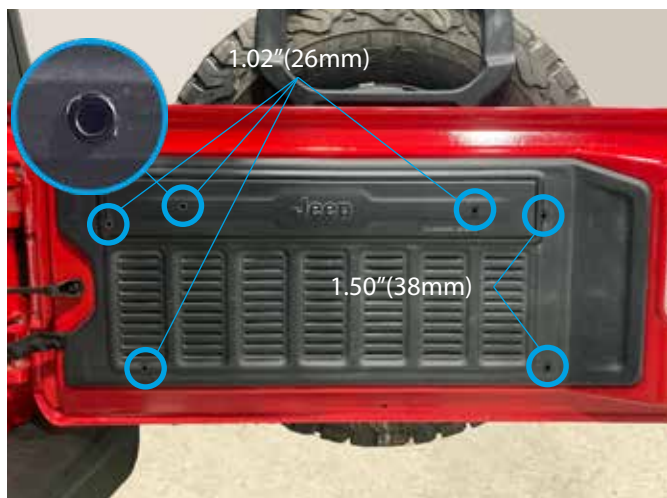


Fig.17

10. Install door plastic cover on the rear door. Install spacer 1.02"(26mm) and spacer 1.50"(38mm) (pos. O, P), (fig. 17).



Fig.18

11. Install left and right bracket (pos. 6,7) and fix it using screw M6x40 (pos. C), M6x50 (pos. B) and M6x60 (pos. A), washer 6 (pos. I), Spring Washer 6 (pos. K), (fig. 18).



Fig.19

12. Install tailgate table (pos. 1) on left and right brackets (pos. 6,7) using spacer 0,20"(5mm) (pos. N) between table and brackets, and fix it using screws M6x25 (pos. D), Nylon plastic washers 6 (pos. H) and nuts M6 (pos. G), (fig. 19,20).

\* Tighten all the hardware and make sure it allows table to be easily opened and closed.

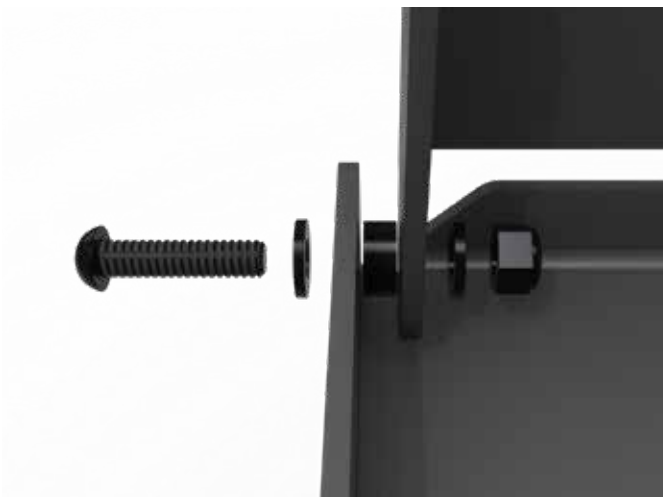


Fig.20



Fig.21



Fig.22

13. Install swing up brackets (pos. 2) one side on brackets from the outside (pos. 6,7) and one side on the table from the inside (pos. 1 ), (fig. 21) using screws M6x20 (pos.E), Nylon plastic wash-ers 6 (pos. H) and nuts M6 (pos. G), (fig. 22).

\* Tighten all the hardware and make sure it allows table to be easily opened and closed.

# INSTALLATION PROCEDURE

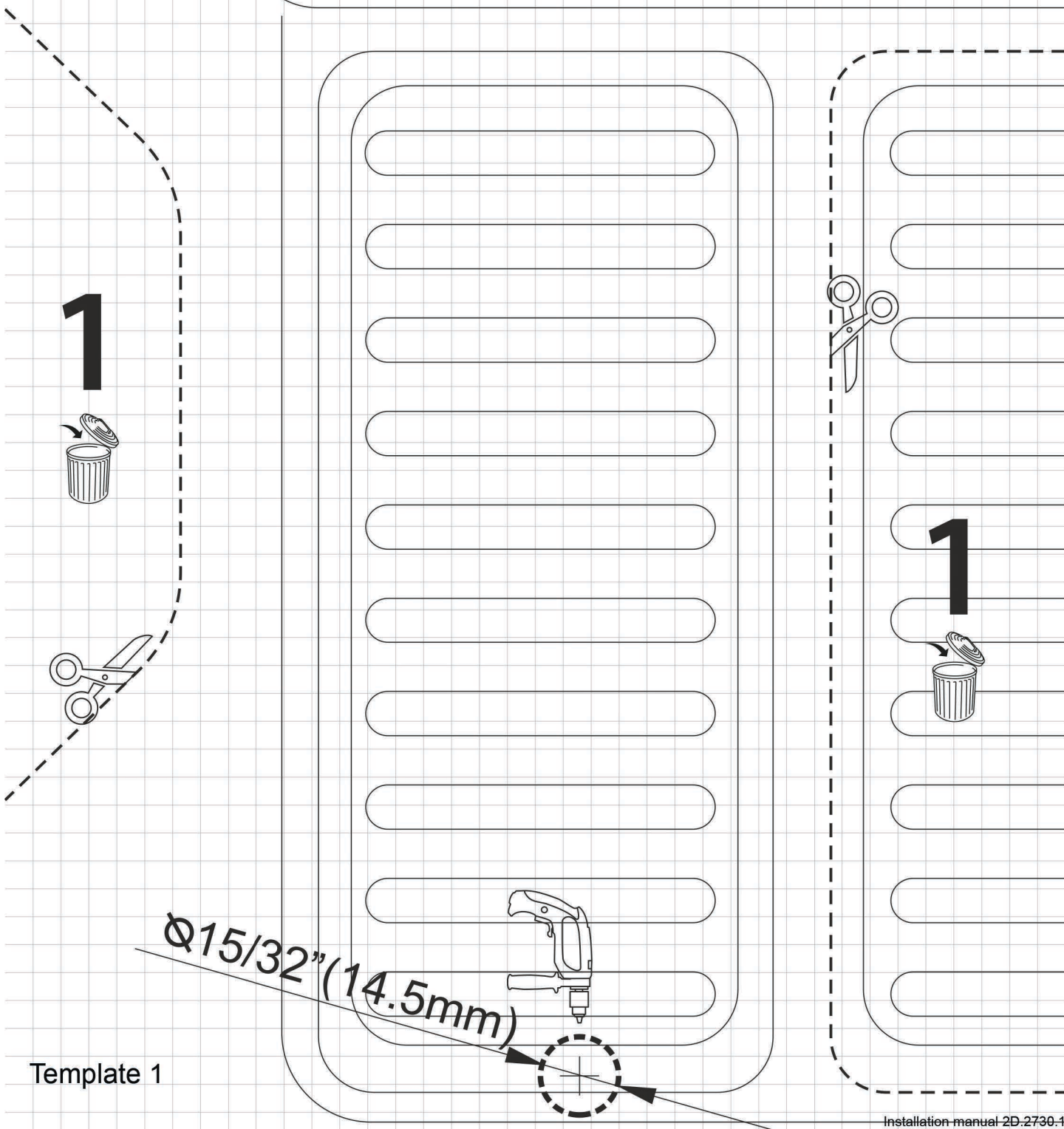
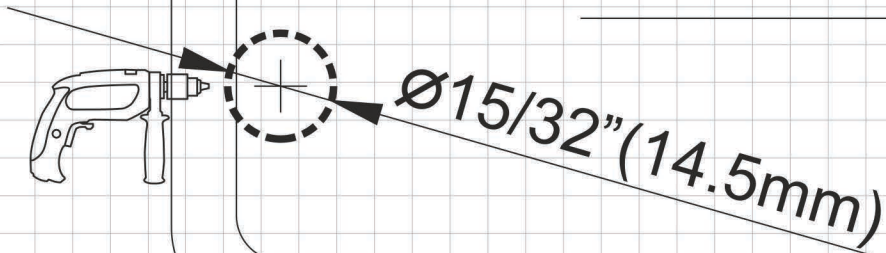
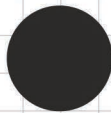


Before operating a vehicle fitted with RIVAL Tailgate Table:

- make sure all fittings are tightened;
- ensure the integrity of the structure and its components.

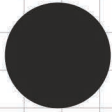




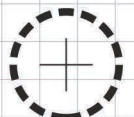
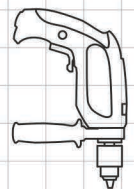
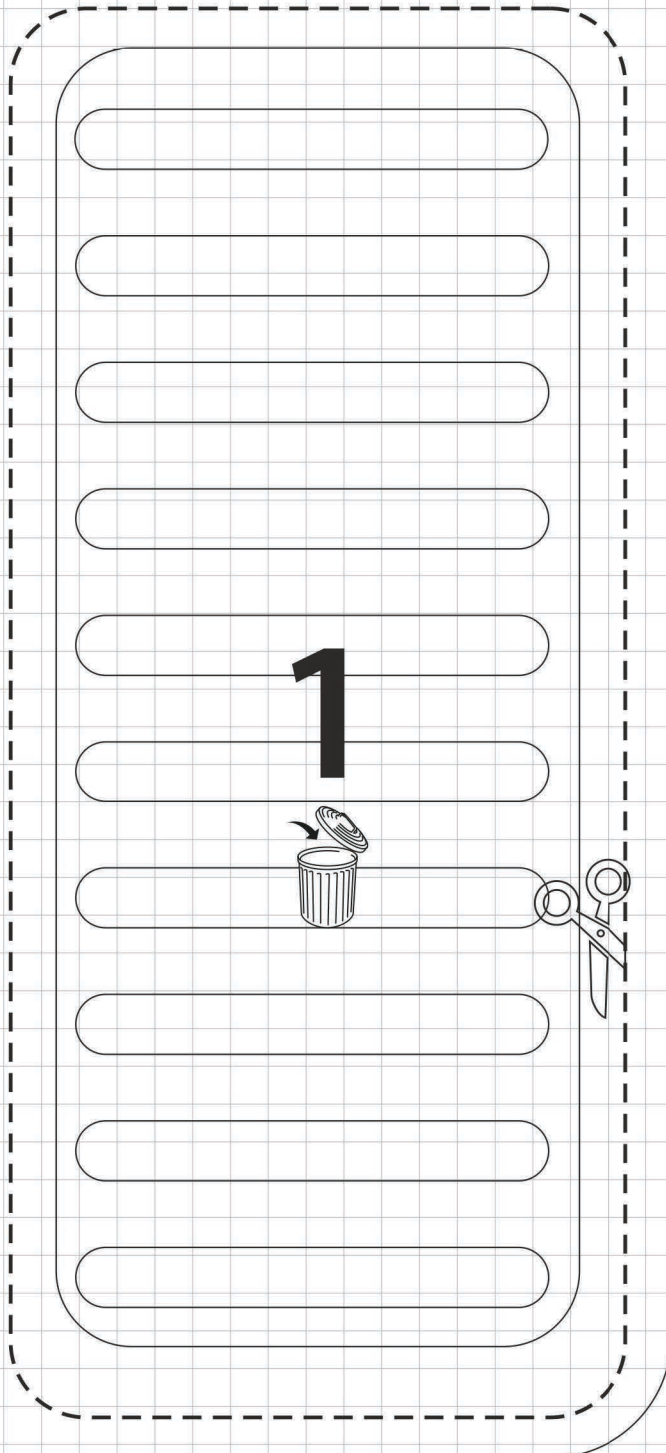
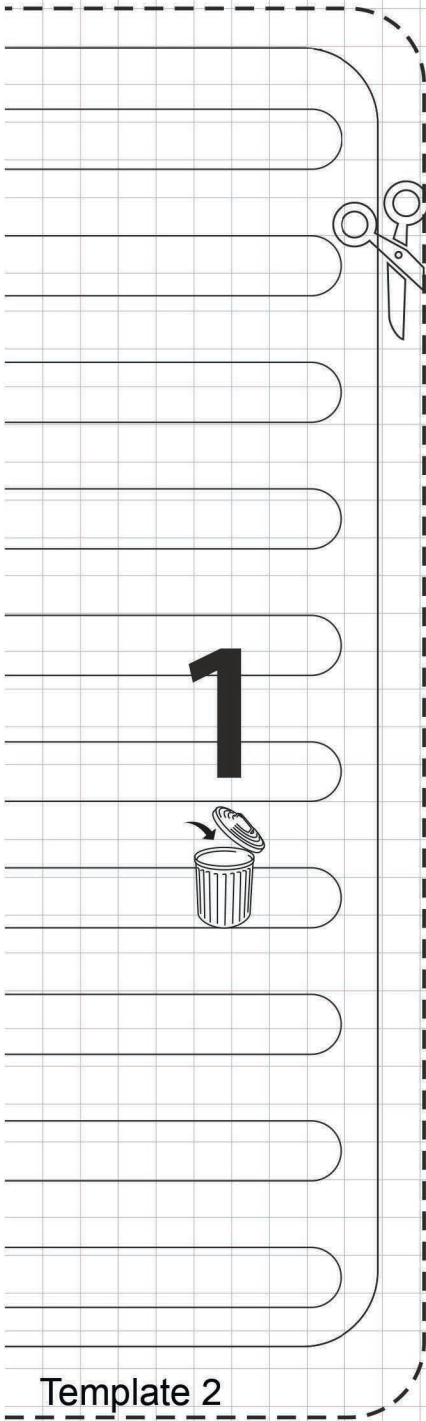
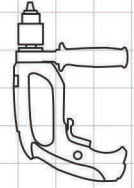


Template 1





$\varnothing 15/32'' (14.5\text{mm})$



Template 2